



The Lauren

BY FLORIDA LIFESTYLE HOMES

The Lauren model features a two-story great room overlooking Lake Timber. This Florida Lifestyle Homes model offers an amazing second story complete with two loft areas, a bonus room and en suite fourth bedroom. There's plenty of room for the family with lots of outdoor living areas and a designer pool.

Contact

(941) 200-6437

42850 Crescent Loop, Babcock Ranch, FL 33982

contact@babcockranch.com

Specifications

Base Price \$925,500

4,081 S.F.

4 Bedrooms

3 Bathrooms

Lake Timber Neighborhood

Single-Family

Built by Florida Lifestyle Homes

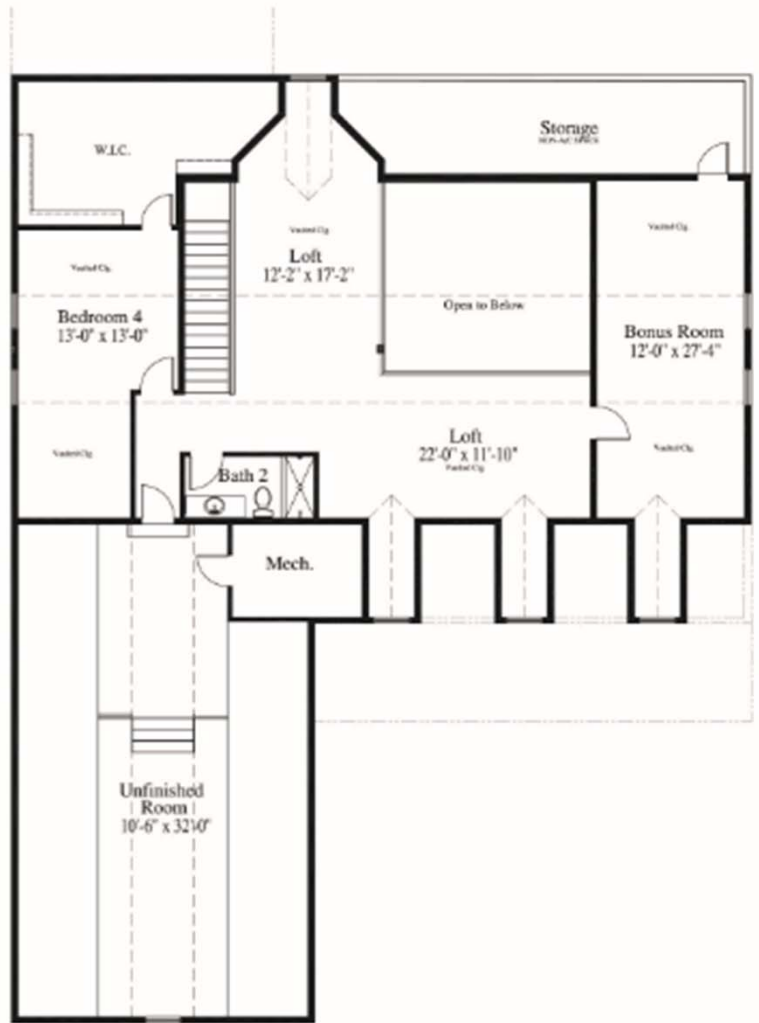
Home Status

Designer Furnished

Home Design



All information is deemed reliable, but is not guaranteed. All prices, dimensions and specifications are subject to change without notice. The master developer reserves the right, in its sole and absolute discretion, to modify plans for the development described or depicted herein at any time without notice. No guarantees or representations whatsoever are made that the features, amenities and facilities, and existing or future views of the project and surrounding areas depicted or otherwise described herein, will be provided, or, if provided, will be of the same type, size, location or nature as depicted or described herein. All rights reserved © 2018 Kitson & Partners and its affiliates.



The Lauren Home Design Area Summary

Floor Plan	
Living A/C	4,081 S.F.
Entry	293 S.F.
Garage	624 S.F.
Outdoor Living	542 S.F.
<u>Total A/C</u>	<u>4,081 S.F.</u>
Grand Total	5,540 S.F.



All information is deemed reliable, but is not guaranteed. All prices, dimensions and specifications are subject to change without notice. The master developer reserves the right, in its sole and absolute discretion, to modify plans for the development described or depicted herein at any time without notice. No guarantees or representations whatsoever are made that the features, amenities and facilities, and existing or future views of the project and surrounding areas depicted or otherwise described herein, will be provided, or, if provided, will be of the same type, size, location or nature as depicted or described herein. All rights reserved © 2018 Kitson & Partners and its affiliates.