



Sandhill

BY PULTE HOMES

The Sandhill is the home that is perfect for entertaining and hosting. The open kitchen hosts an island that connects to a formal dining room, with an option for a butler’s pantry. After an enjoyable meal, the natural flow draws guests to the over-sized gathering room. Downstairs, you can turn the spacious den into a media room or a professional study if you work from home. Upstairs, an over sized game room invites kids to gather and play in a place of their own. With four bedrooms, there is space for everyone.

CONTACT US

PULTE HOMES

17528 SILVERSPUR DRIVE
BABCOCK RANCH, FL 33982

877.843.9784

Specifications

Base Price: \$311,990 2.5 Bathrooms

Home Type: Single Family

FLOORPLAN
NEXT PAGE

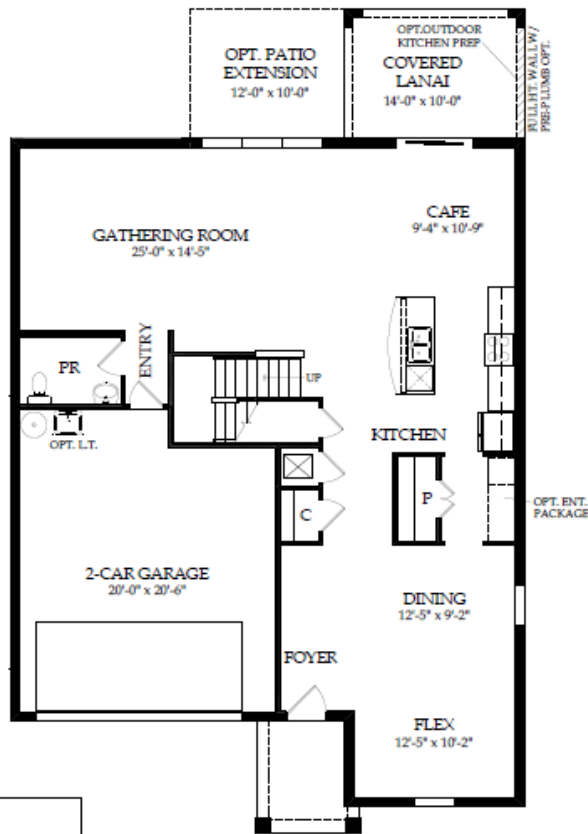
3,222 sq.ft. Parkside

Builder: Pulte Homes

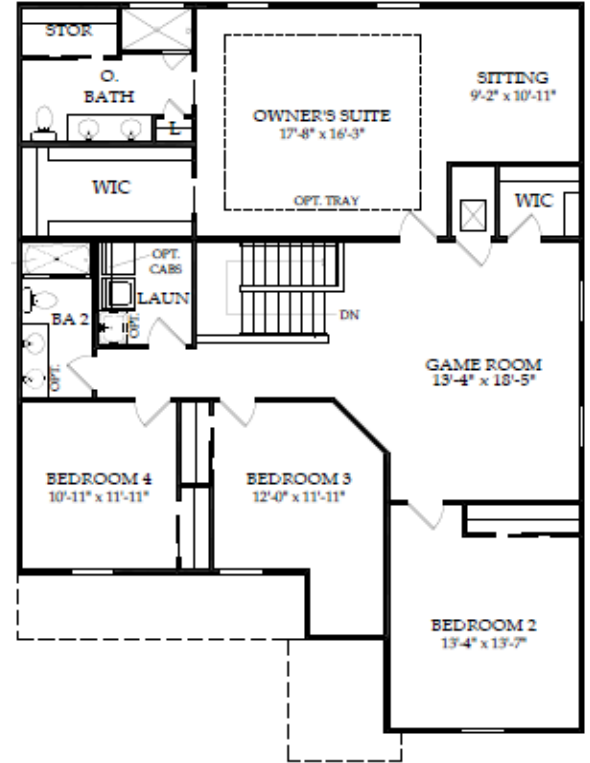


4 Bedrooms Home Design





First Floor



Second Floor

Options Not Available:
 Walk-In Shower Option @ Owner's Bath
 Opt. Seat at Owner's Bath Shower
 3-Car Garage

Options Included:
 Covered Lanai

SANDHILL
 AREA SUMMARY

ENTRY	62 S.F.
GARAGE	477 S.F.
OUTDOOR LIVING	140 S.F.
TOTAL A/C	3,222 S.F.
GRAND TOTAL	3,901 S.F.